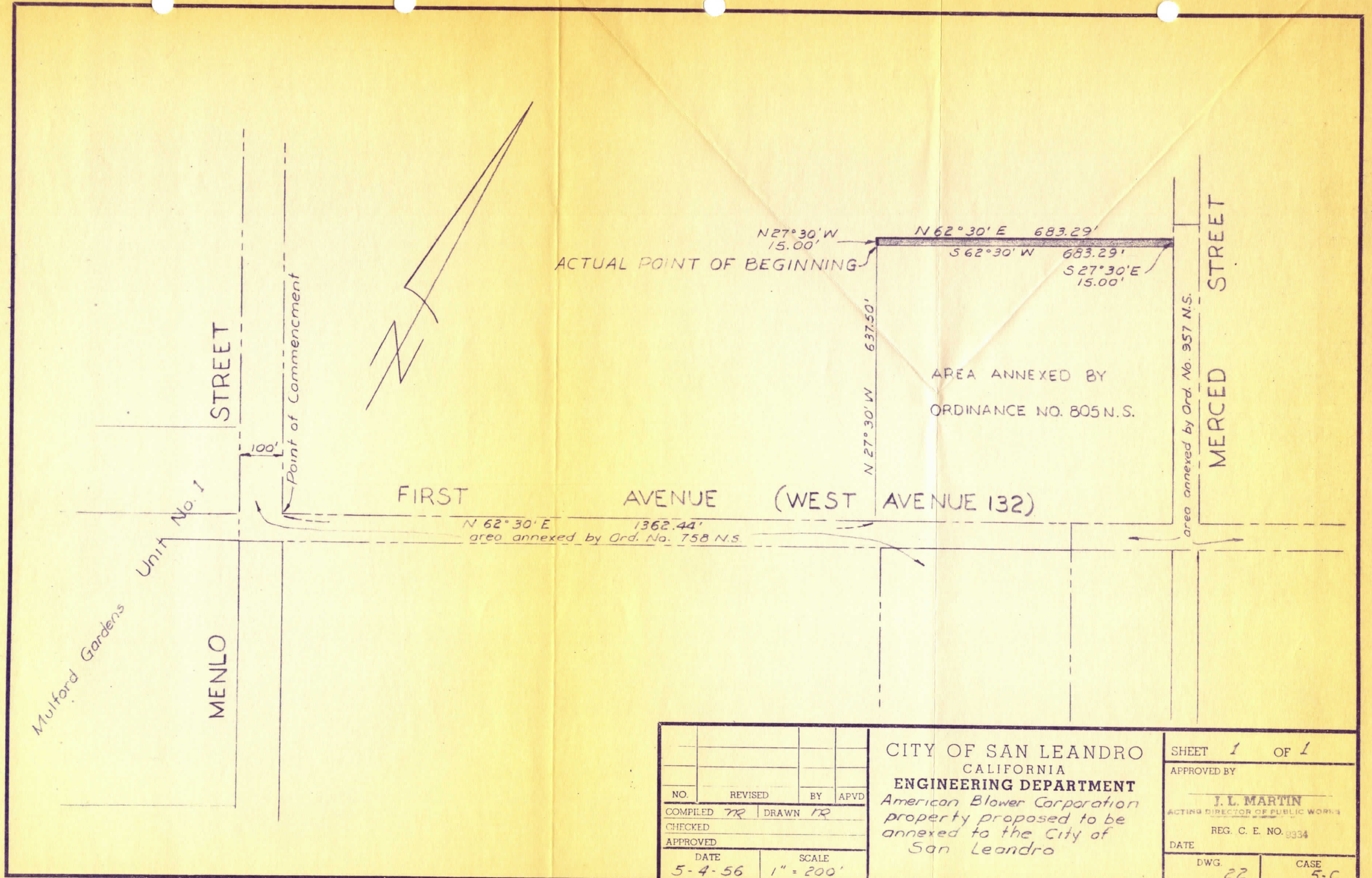


NO.	REVISED	BY	APVD
COMPILED	TR	DRAWN	TR
CHECKED			
APPROVED			
DATE	SCALE		
5-4-56	1" = 200'		

CITY OF SAN LEANDRO
 CALIFORNIA
ENGINEERING DEPARTMENT
American Blower Corporation
 property proposed to be
 annexed to the City of
 San Leandro

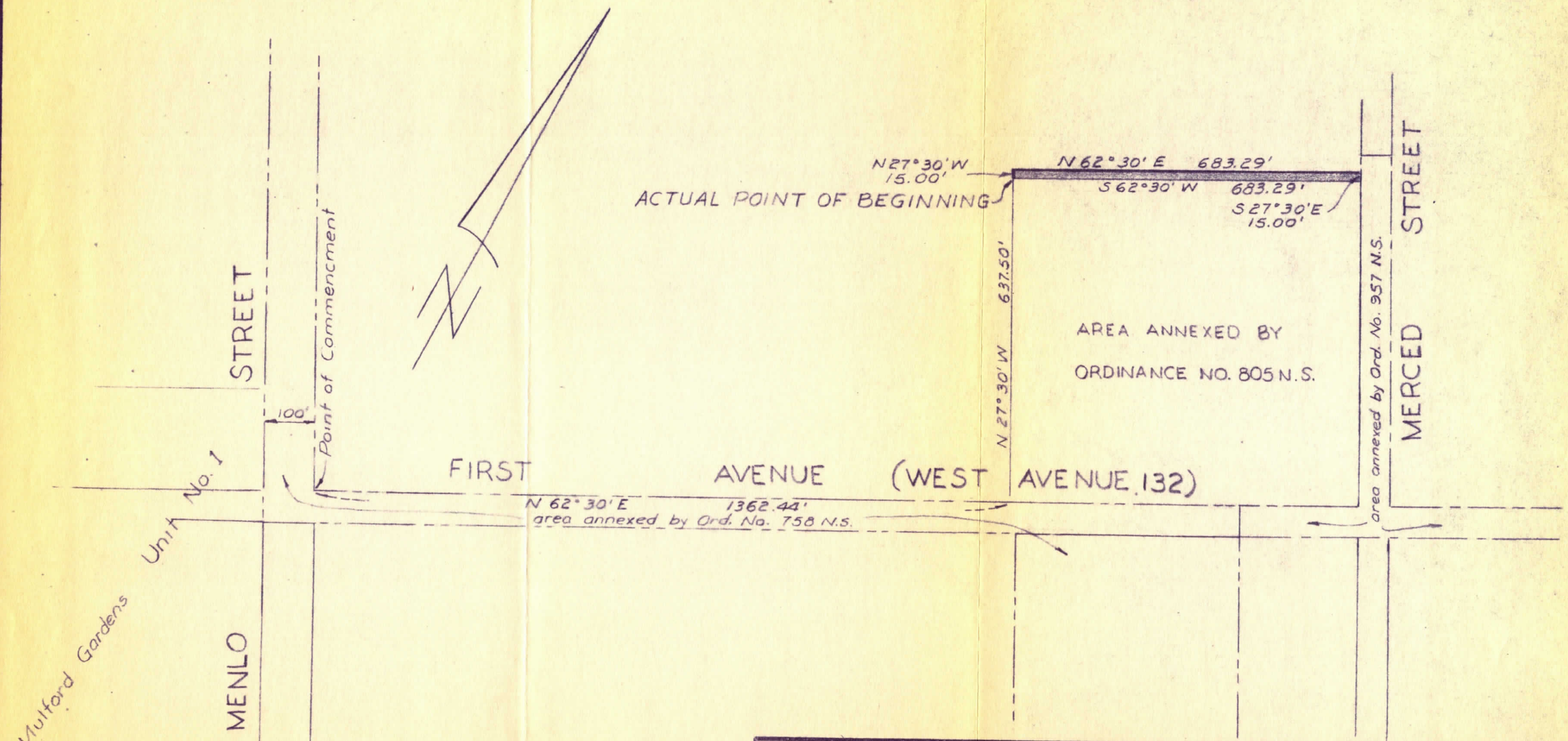
SHEET 1 OF 1
 APPROVED BY
J. L. Martin
J. L. MARTIN
 ACTING DIRECTOR OF PUBLIC WORKS
 REG. C. E. NO. 9334
 DATE
 DWG. 22 CASE 5-C



NO.	REVISED	BY	APVD
COMPILED	TR	DRAWN	TR
CHECKED			
APPROVED			
DATE	SCALE		
5-4-56	1" = 200'		

CITY OF SAN LEANDRO
 CALIFORNIA
ENGINEERING DEPARTMENT
American Blower Corporation
 property proposed to be
 annexed to the City of
 San Leandro

SHEET 1 OF 1
APPROVED BY
J. L. MARTIN
ACTING DIRECTOR OF PUBLIC WORKS
REG. C. E. NO. 9334
DATE
DWG. 22
CASE 5-C



NO.	REVISED	BY	APVD
COMPILED	TR	DRAWN	TR
CHECKED			
APPROVED			
DATE	SCALE		
5-4-56	1" = 200'		

CITY OF SAN LEANDRO
 CALIFORNIA
ENGINEERING DEPARTMENT
American Blower Corporation
 property proposed to be
 annexed to the City of
 San Leandro

SHEET 1 OF 1
 APPROVED BY
J. L. Martin
J. L. MARTIN
 ACTING DIRECTOR OF PUBLIC WORKS
 REG. C. E. NO. 9834
 DATE
 DWG. 22 CASE 5-C